



NAPOLI 27 – 28 SETTEMBRE

Aula Magna Scuola di Medicina di Scampia
Centro Congressi Università degli Studi di Napoli Federico II
Via Valerio Verbano Snc, Scampia - Napoli



PERCORSI IN PS (non solo trauma)

Giovanna Guiotto

UOC Medicina d'Urgenza-Pronto Soccorso

ODM

URGENZE/EMERGENZE CHIRURGICHE

TRAUMATICHE

- dinamica
- clinica (dolore!)
- imaging
- percorsi

NON TRAUMATICHE

- anamnesi
- clinica (dolore?)
- lab/imaging
- diagnosi differenziale

S.O.

```
graph TD; T[TRAUMATICHE] -.-> SO((S.O.)); NT[NON TRAUMATICHE] -.-> SO;
```



Maria, 25 anni.

pH	7.05
PCO₂	7.4
HCO₃	1.8
PO₂	128
GA	43.2
Lact	4.2
Glu	392

DOLORE ADDOMINALE

- Parto cesareo (2 settimane)
- addome diffusamente dolente
- PA 110/60 mm Hg
- FC 100
- SpO₂ 99% in aria
- FR 28

Adriano, 65 anni.

Astenia e diarrea

- patologia psichiatrica.....
- addome diffusamente dolente
- PA 110/60 mm Hg
- FC 100
- SpO₂ 99% in aria
- FR 28

J Trauma 1996

**Focused
Abdominal
Sonography for
Trauma**

J Trauma 1999

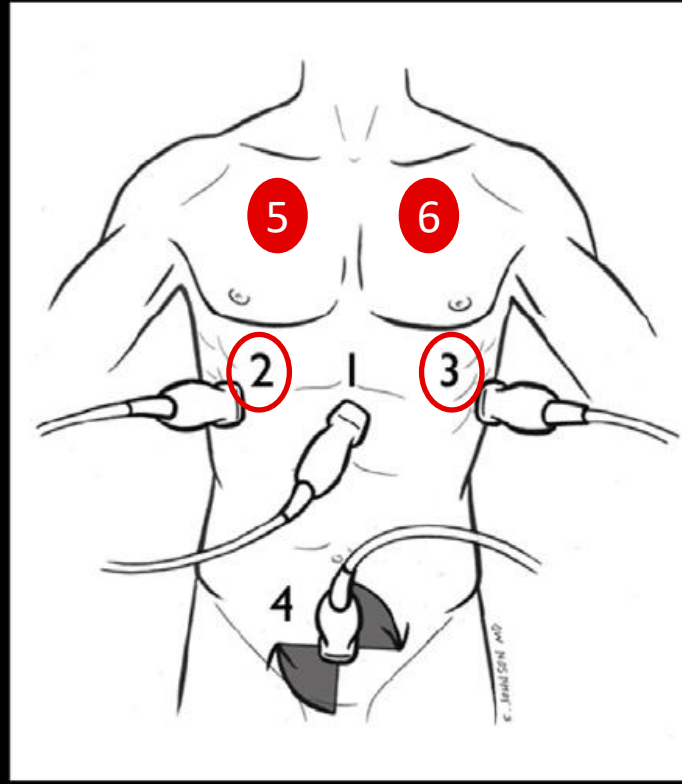
**Focused
Assessment with
Sonography for
Trauma**

J Trauma 2004

**Extended
Focused
Assessment with
Sonography for
Trauma**

TRAUMA FAST EXAM

- 1 Cardiac-Subxiphoid
- 2 RUQ-Hepatorenal
- 3 LUQ-Splenorenal
- 4 Suprapubic Views

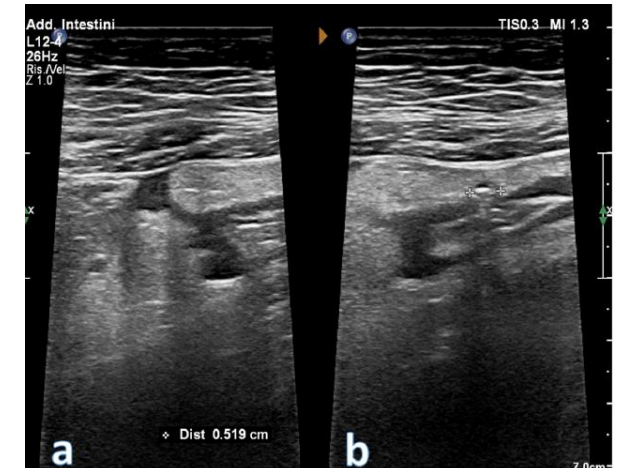
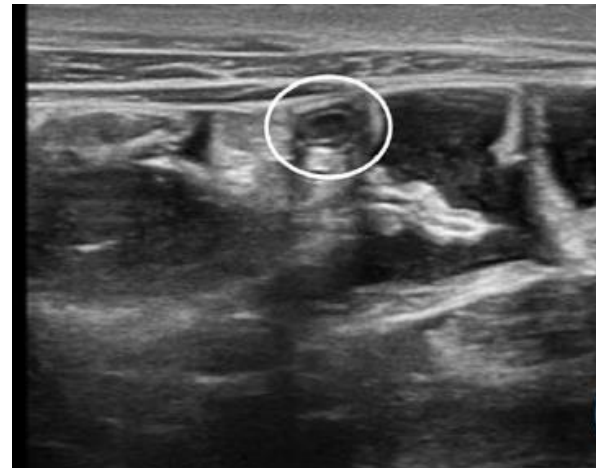
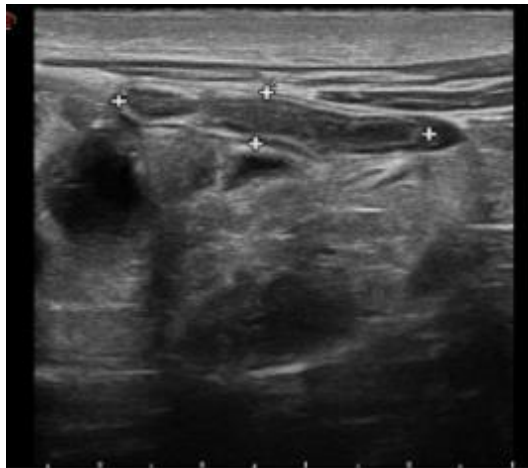
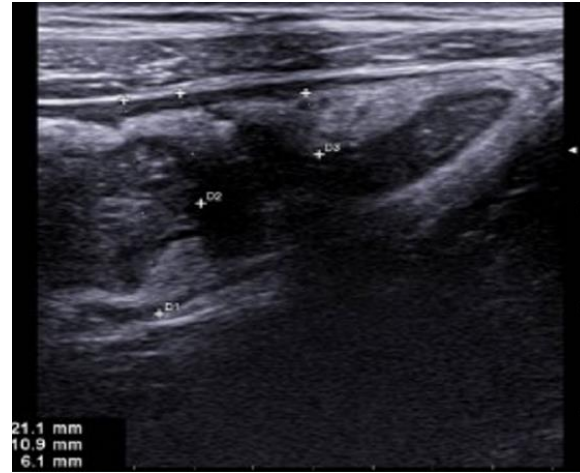
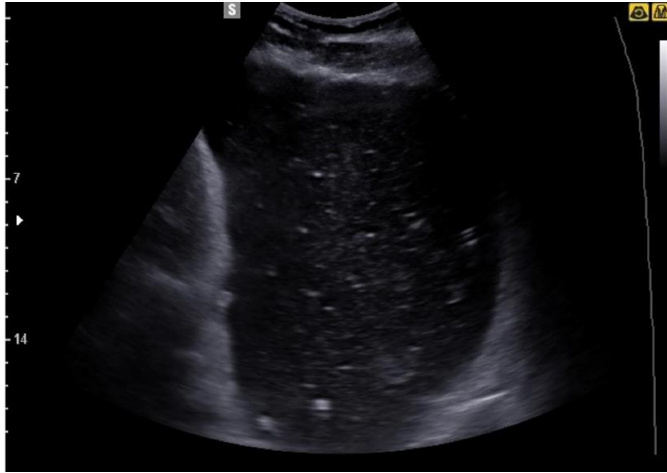


Review

Gastrointestinal Ultrasound in Emergency Setting

Andrea Boccatonda ^{1,*}, Damiano D'Ardes ², Viola Tallarico ³, Susanna Vicari ¹, Elena Bartoli ¹, Gianpaolo Vidili ⁴,
Maria Teresa Guagnano ², Giulio Cocco ⁵, Francesco Cipollone ², Cosima Schiavone ⁵ and Esterita Accogli ⁶

J. Clin. Med. 2023, 12, 799. <https://doi.org/10.3390/jcm12030799>

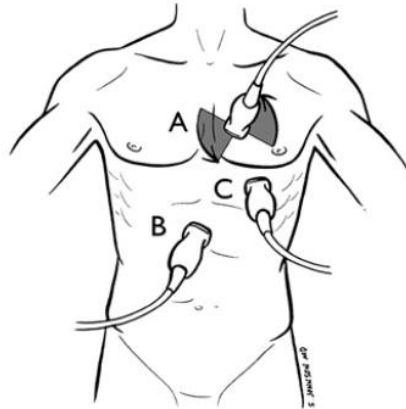


The RUSH Exam: Rapid Ultrasound in SHock in the Evaluation of the Critically Ill

Emerg Med Clin N Am 28 (2010) 29–56

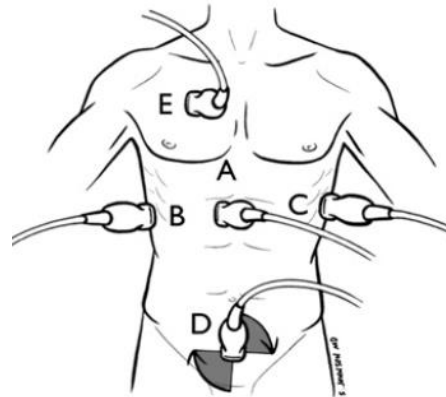
Phillips Perera, MD, RDMS, FACEP^{a,*}, Thomas Mailhot, MD, RDMS^b,
David Riley, MD, MS, RDMS^a, Diku Mandavia, MD, FACEP, FRCPC^{b,c}

The pump



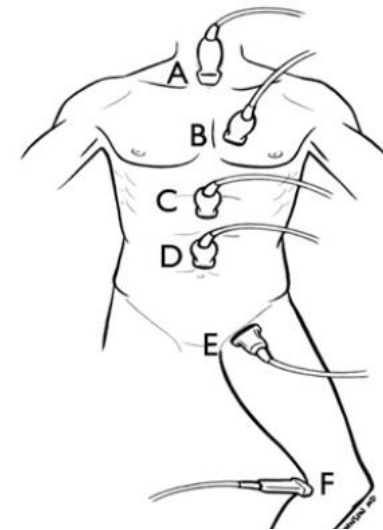
- A) Parasternal Views
Long / Short Axis
- B) Subxiphoid View
- C) Apical View

The tank



- A) IVC Long Axis
- B) FAST / RUQ
Add Pleural View
- C) FAST / LUQ
Add Pleural View
- D) FAST / Pelvis
- E) Pneumothorax
Pulmonary Edema

The pipes



- A) Suprasternal Aorta
- B) Parasternal Aorta
- C) Epigastric Aorta
- D) Supraumbilical Aorta
- E) Femoral DVT
- F) Popliteal DVT



PERCORSI IN PS

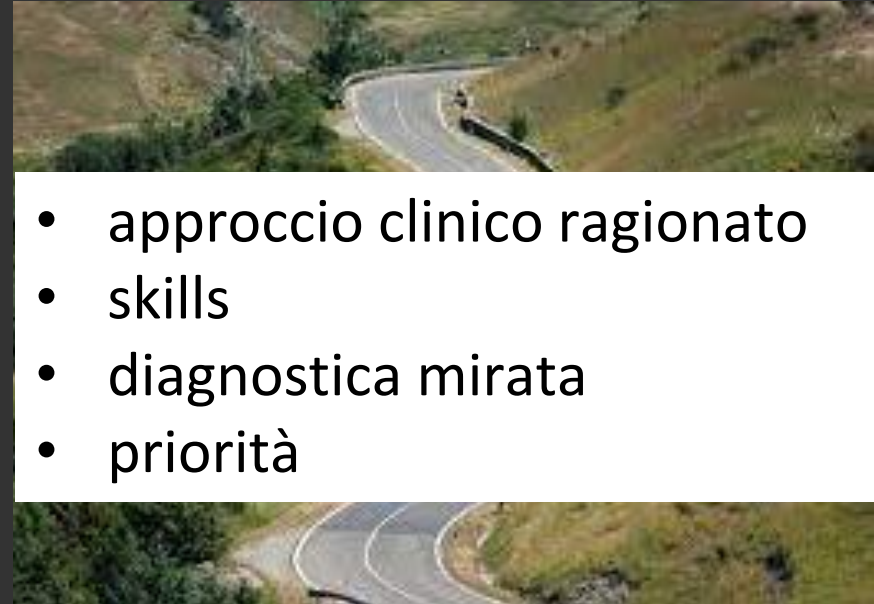
trauma



Percorsi:

- condivisi
- contesto specifici
- “exit strategy”

emergenze chirurgiche?



- approccio clinico ragionato
- skills
- diagnostica mirata
- priorità