



AZIENDA
OSPEDALIERA
SAN PIO

BENEVENTO

UOC CARDIOLOGIA INTERVENTISTICA
Unità di Terapia Intensiva Cardiologica
Direttore: Dr. Marino SCHERILLO

AORN "SAN PIO" di Benevento

Azienda Ospedaliera di Rilievo Nazionale e di Alta Specializzazione

Unità Operativa Complessa

Cardiologia Interventistica e UTIC

Centro HUB I Livello – Centrale Cardiologica Regionale

Direttore : Dr. Marino Scherillo

Agonisti Recettoriali GLP-1 nel Paziente Diabetico con Cardiopatia Ischemica

Antonio Parente

HOT TOPICS IN CARDIOLOGIA 2024

Napoli, 27 novembre 2024

ACS & T2D

Lessons From

SWEDEHEART

Annual Report 2023

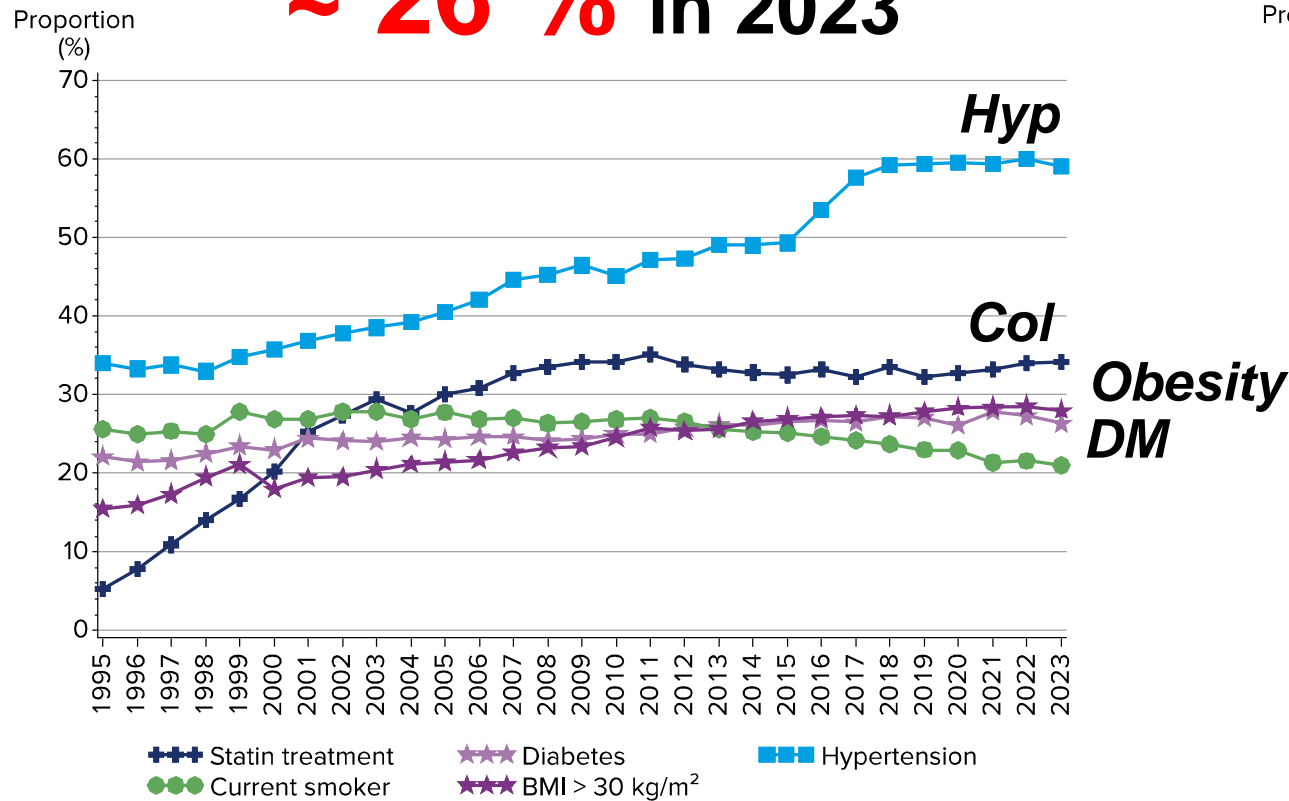


DM Prevalence in MI Patients

1995 – 2023

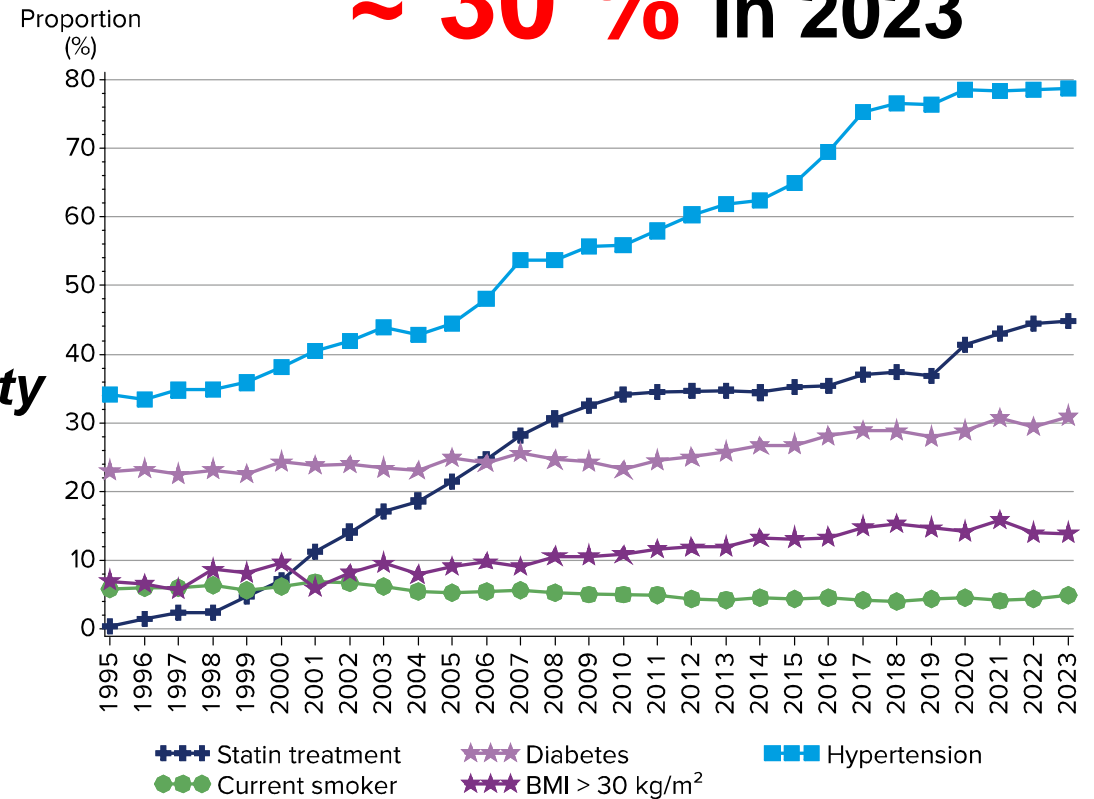
< 80 years

~ 26 % in 2023



≥ 80 years

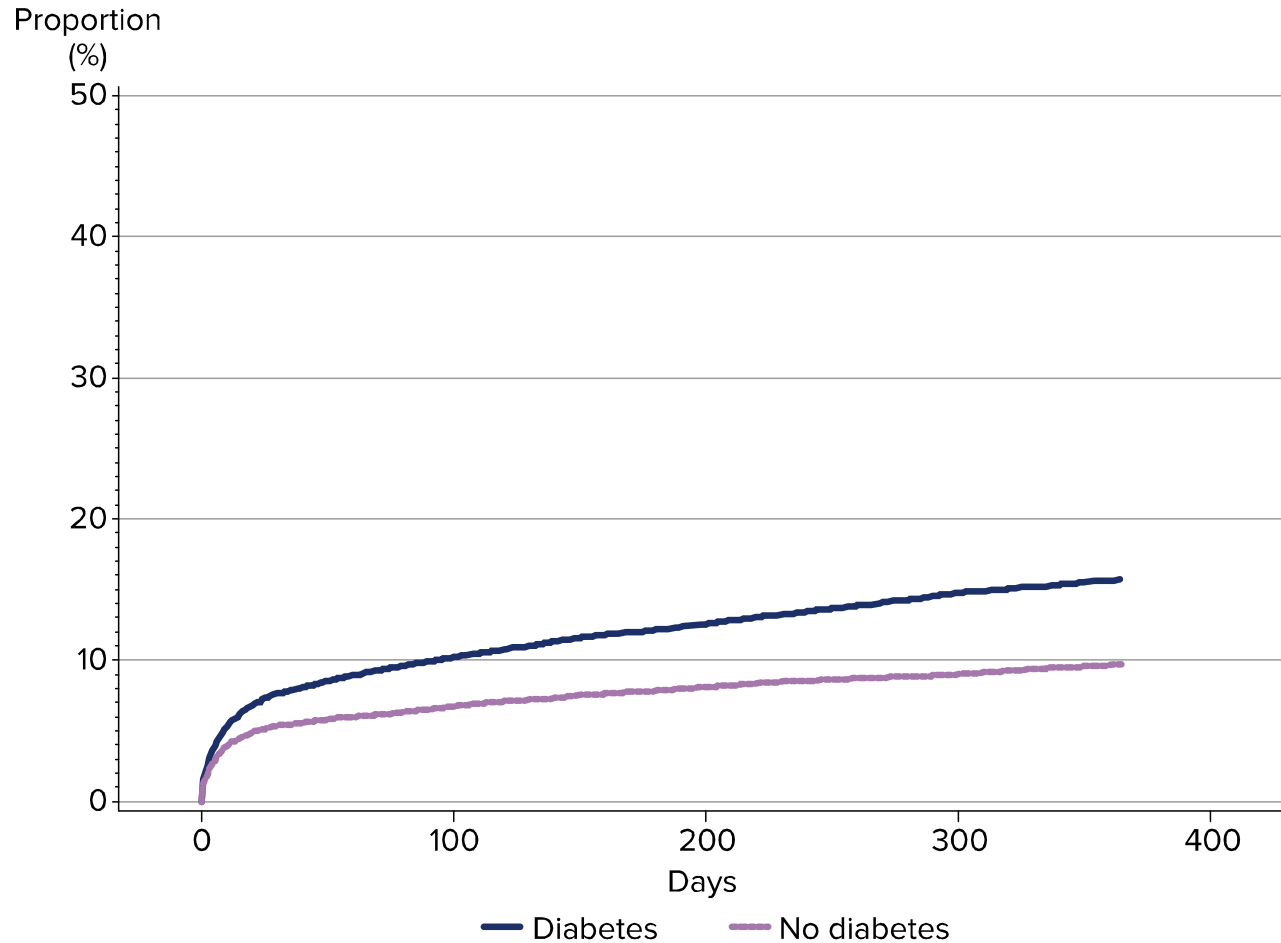
~ 30 % in 2023





One-Year Mortality in MI Patients

2021–2022



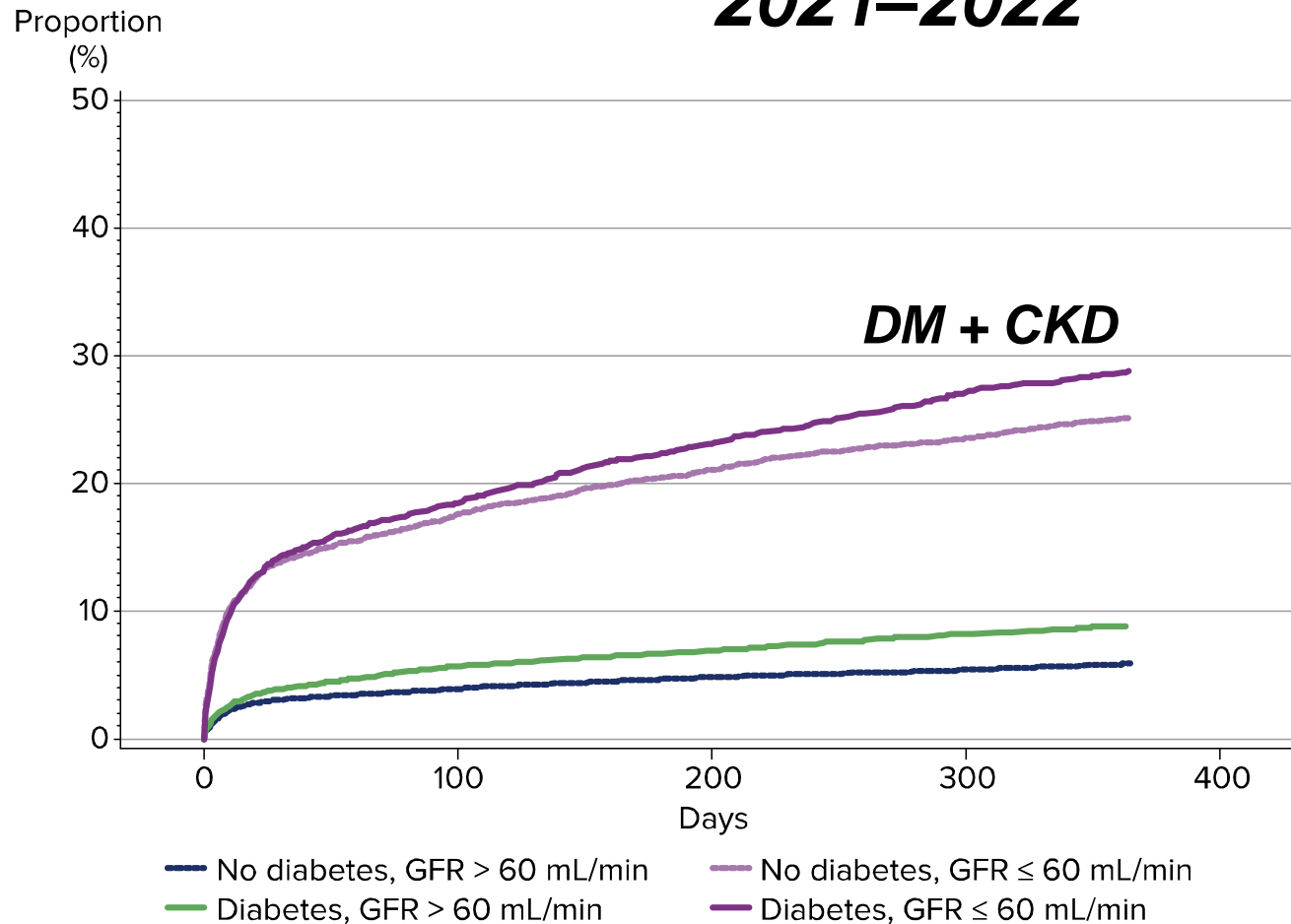
DM
~ 16 %

NO DM
~ 10 %



One-Year Mortality in MI Patients with DM & CKD

2021–2022

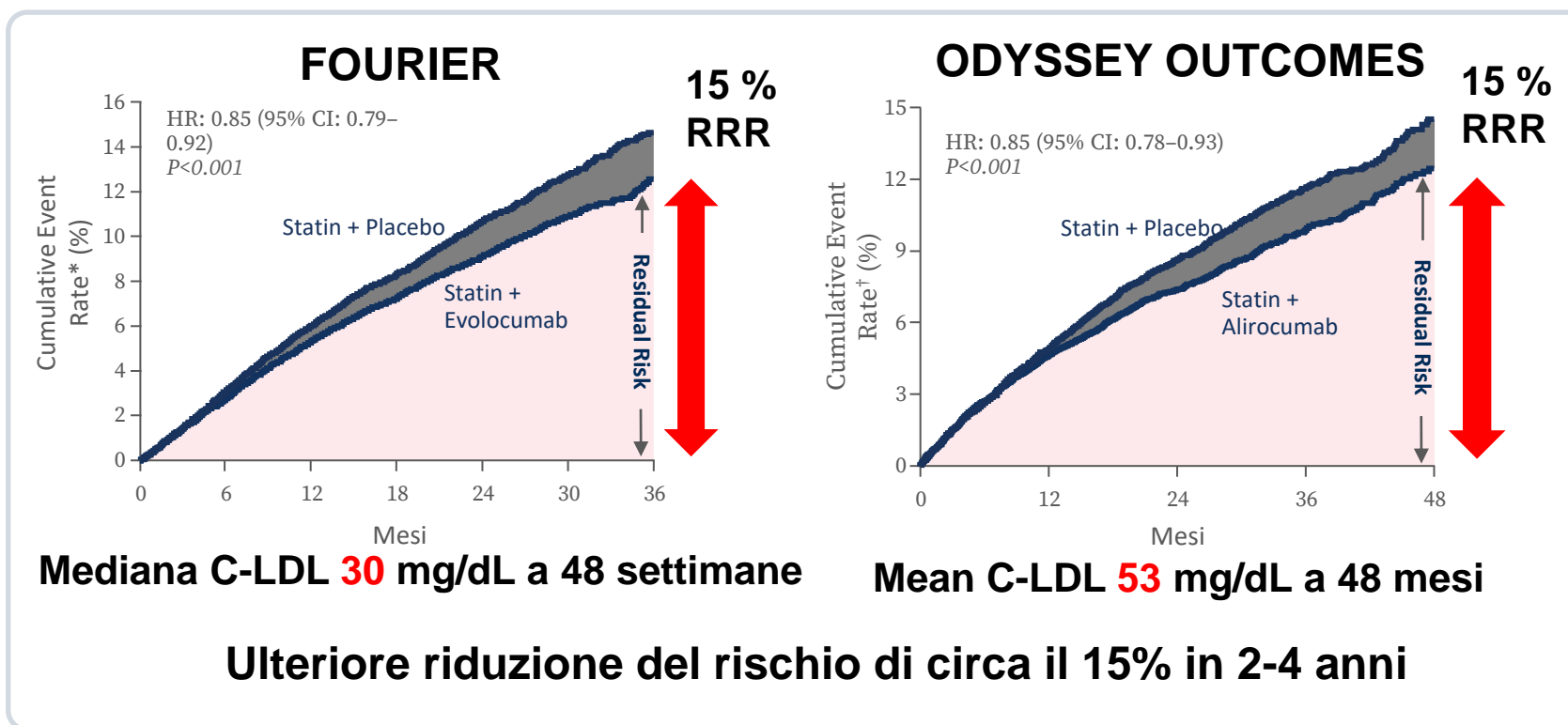


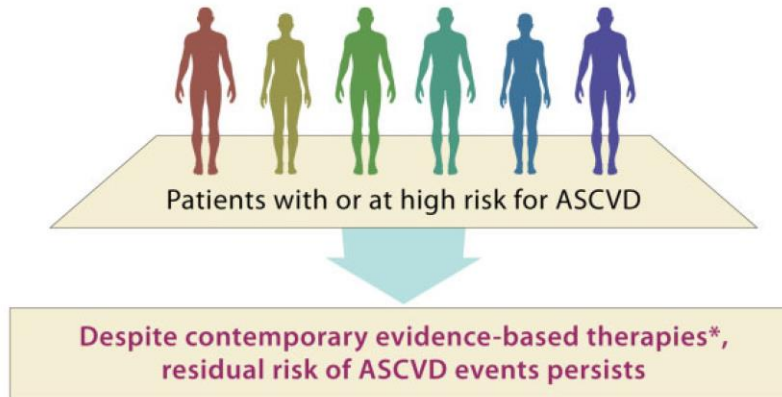
■ DM
&
GFR ≤ 60 mL/min
~ 29 %

GLP1 - RA :

***Drug Disease Modifying
in ASCVD & T2D***

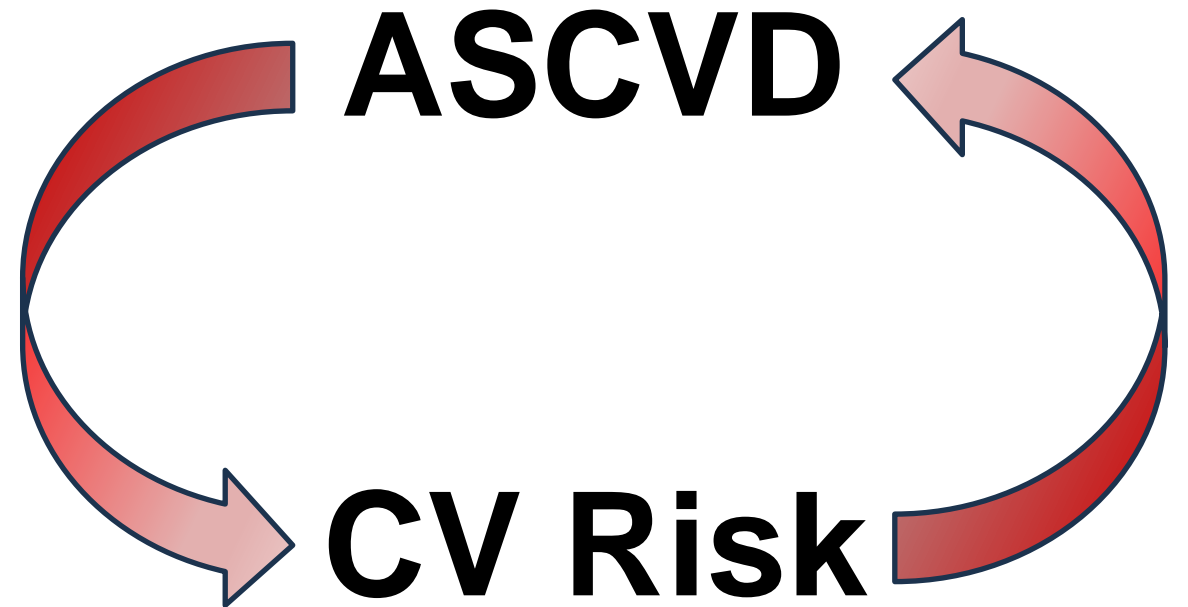
Il Rischio Residuo **PERSISTE** nonostante l'aggressiva riduzione di LDLc con PCSK9-i





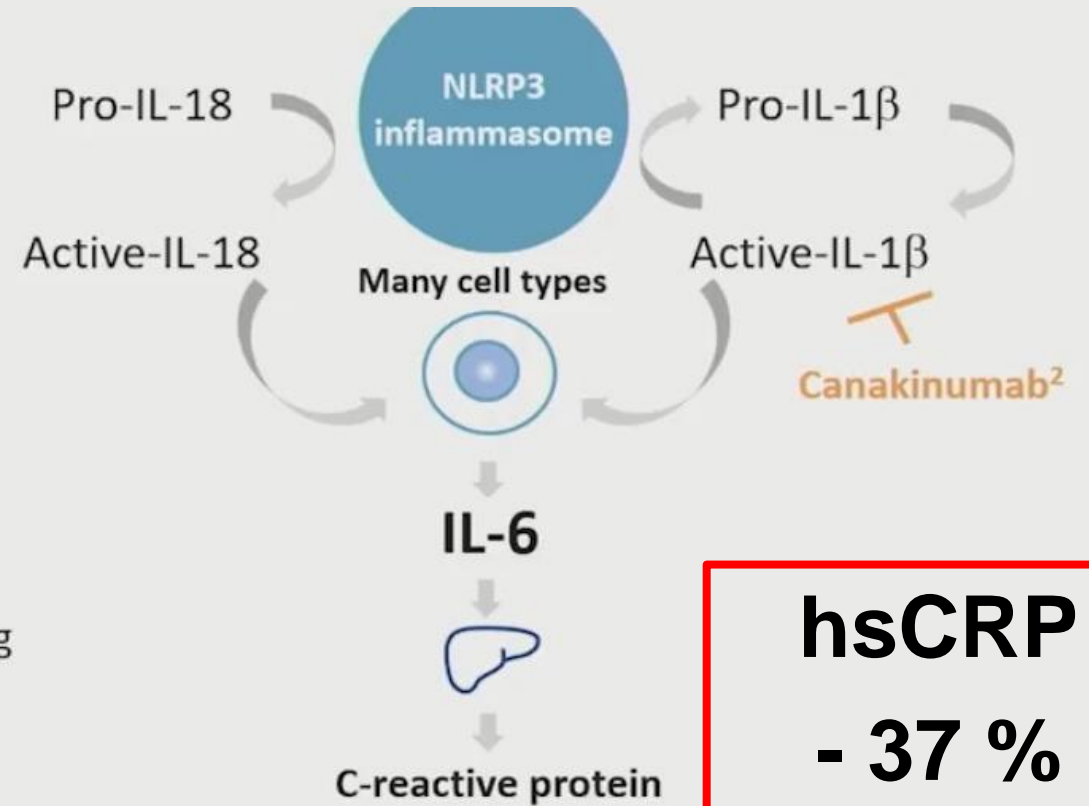
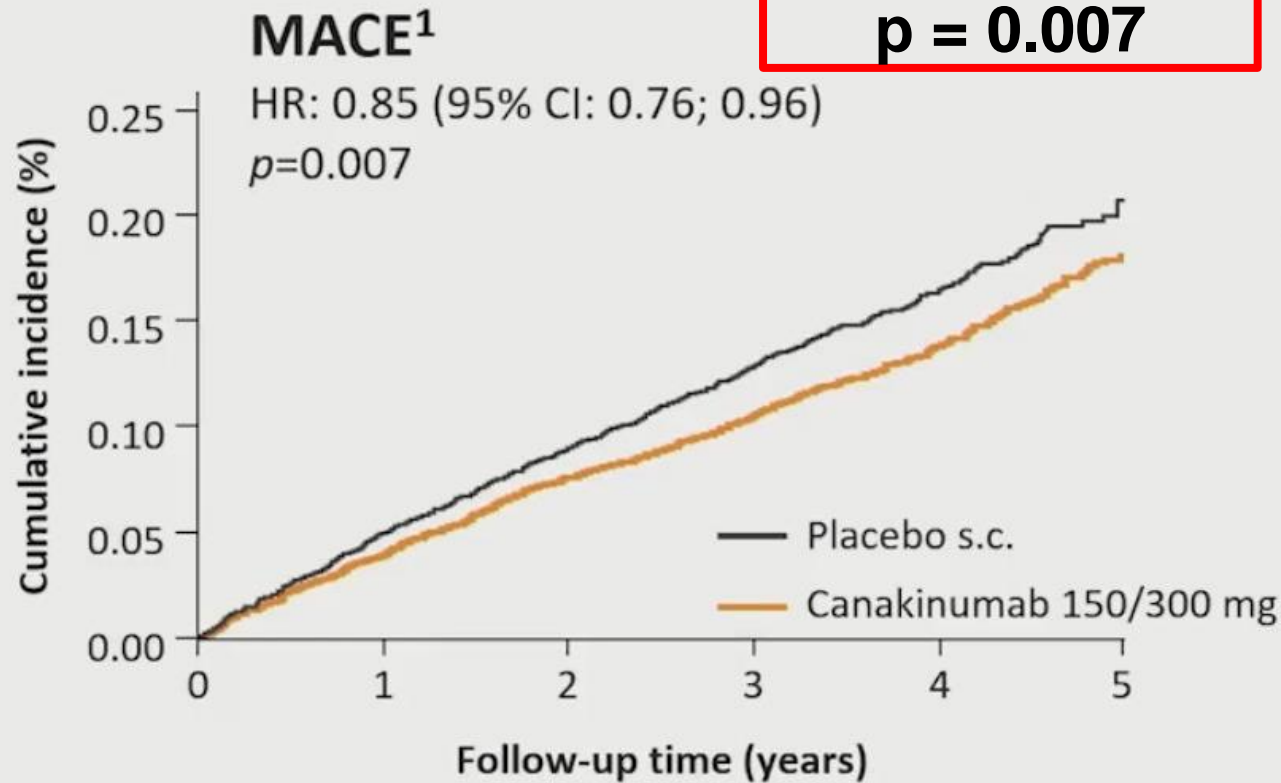
DIABETE

GLP1-RA 4 Shields Defender



Anti-inflammatory therapy reduces the incidence of MACE: CANTOS (canakinumab)

RRR 15%
p = 0.007

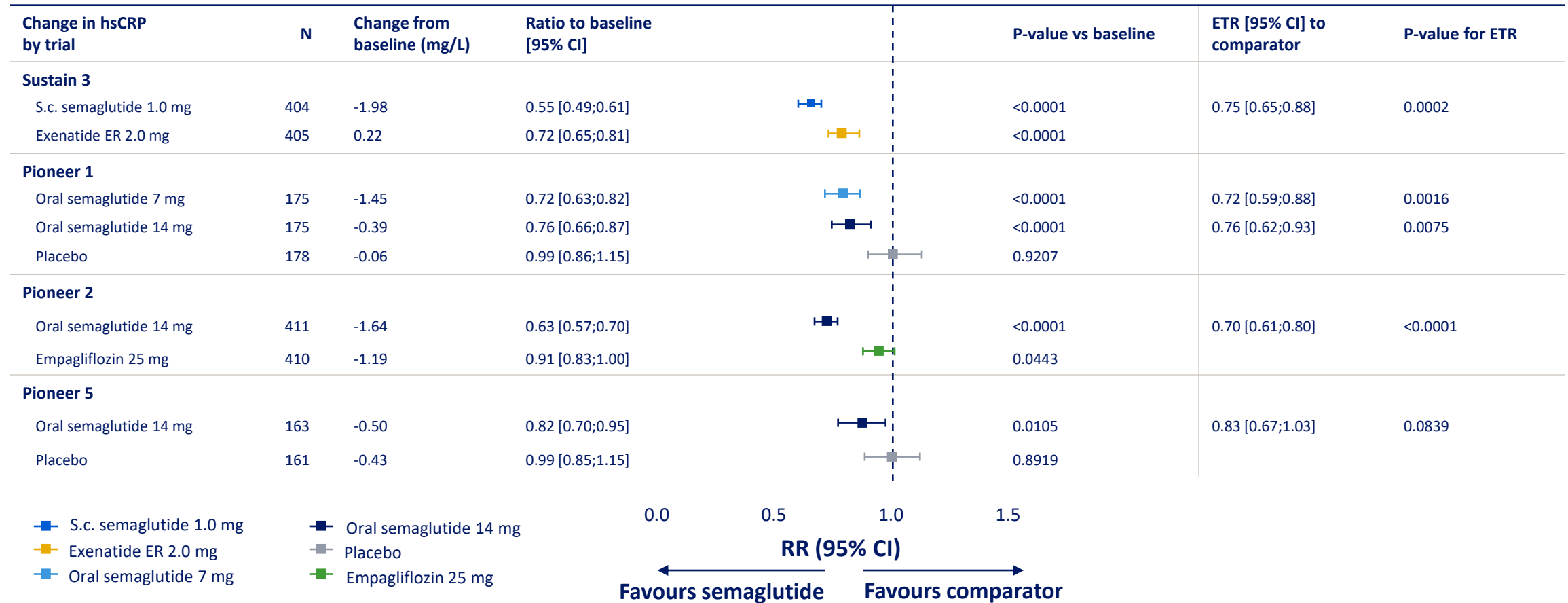


hsCRP
- 37 %
at 48 Months

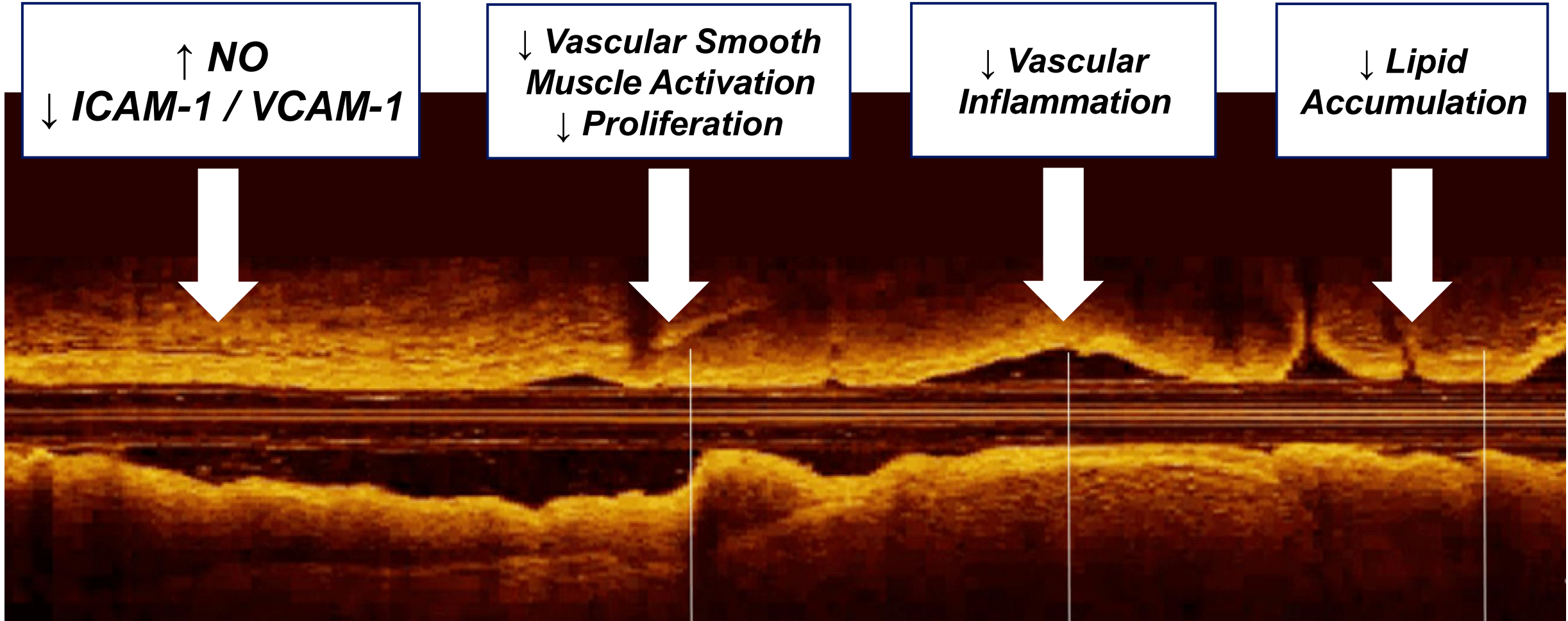
CI, confidence interval; CRP, C-reactive protein; hsCRP, high-sensitivity C-reactive protein; IL, interleukin; MACE, major adverse cardiovascular events; NLRP3, NOD-, LRR- and pyrin domain-containing protein 3
1. Aday AW et al. *Front Cardiovasc Med* 2018;5:62; 2. Ridker PM et al. *Circulation* 2020;141:787-789

Semaglutide reduced hsCRP in people with T2D

PIONEER 1, 2 and 5; SUSTAIN 3 trials



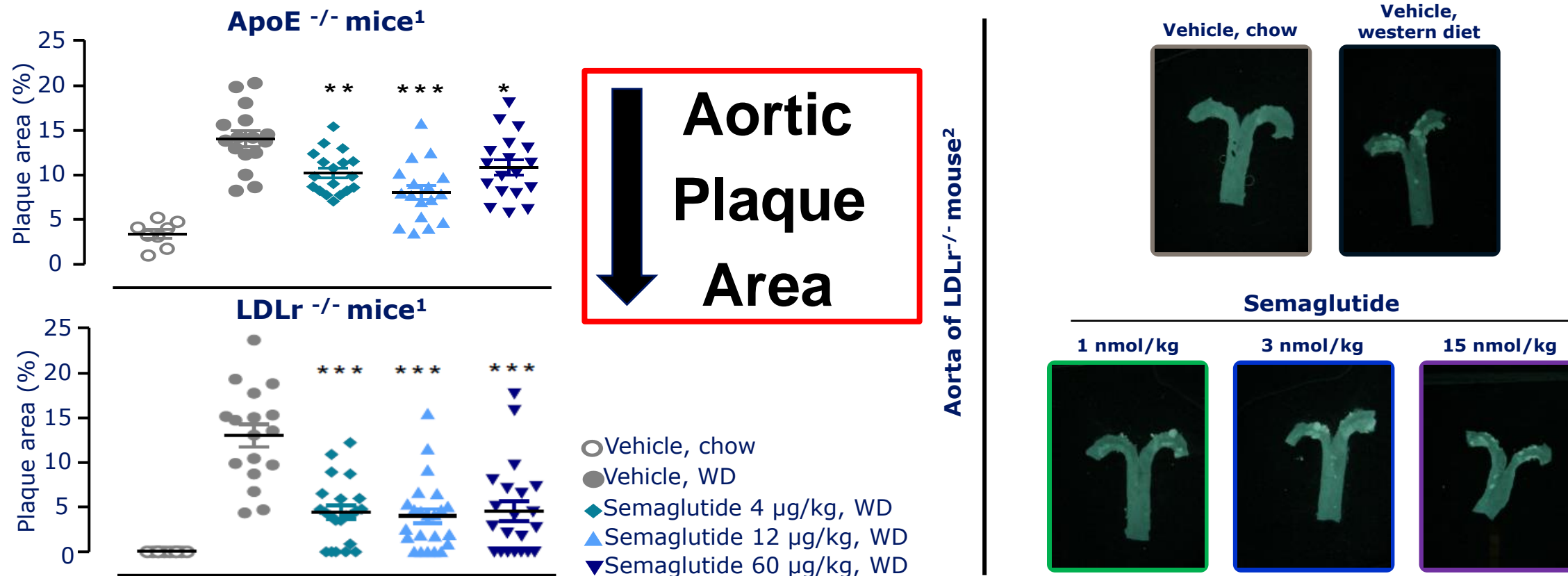
Direct Effects of GLP-1 on Atherosclerotic Plaque



SEMAGLUTIDE

Downregulates Genes related to Atherosclerosis

Anti-atherosclerotic effects in mouse models



GLP1-RA (R)Evolution

Improving CV Outcomes

in Patients **With T2D**



THE LANCET

Diabetes & Endocrinology

Oct 2021

Naveed Sattar

Cardiovascular, mortality, and kidney outcomes with GLP-1 receptor agonists in patients with type 2 diabetes: a systematic review and meta-analysis of randomised trials

Naveed Sattar, Matthew M Y Lee*, Søren L Kristensen*, Kelley R H Branch, Stefano Del Prato, Nardev S Khurmi, Carolyn S P Lam, Renato D Lopes, John J V McMurray, Richard E Pratley, Julio Rosenstock, Hertzell C Gerstein*

**GLP1-RA
Metanalysis:
*Outcome Results***

**8 RCTs
60.080 T2DM PTS**

3-P MACE
CV Death, MI, Stroke

- 14 %

CV Death

- 13 %

HF H

- 11 %

GLP1-RA

**All Cause
Mortality**

- 12 %

**Composite
Kidney
Outcome**

- 21 %



FUTURE

Waiting for **SOUL** Trial

Oral Semaglutide vs Placebo in T2DM Patients With ASCVD or CKD



- International, randomized, double-blind, placebo-controlled phase III trial with dose escalations at Wk 4, 8

Patients with T2D with
CVD or CKD; age ≥ 50 yr;
A1C 6.5%-10.0%

Enrollment complete:

N = 9.642

**Oral SEMAGLUTIDE
up to 14 mg QD**

Oral Placebo QD

3-Point MACE
CV Death / MI / Stroke

Follow Up

RCT Event Driven Up To 5 Years – Until 1.225 First Events

Waiting for **SOUL** Trial

Oral Semaglutide vs Placebo
in T2DM Patients With ASCVD or CKD



3-Point MACE
CV Death / MI / Stroke



RRR
- 14 %

company announcement **Bagsværd (Denmark)**
21 October 2024

Oral semaglutide demonstrates a 14% reduction in risk of major adverse cardiovascular events in adults with type 2 diabetes in the SOUL trial

MARCH 29 - 31, 2025
CHICAGO

TRANSFORMING
CARDIOVASCULAR
CARE FOR ALL

The American College of Cardiology logo, featuring a circular emblem with a figure, is positioned to the left of the text "AMERICAN COLLEGE of CARDIOLOGY". To the right of the logo is a stylized illustration of a human heart and its major blood vessels in white and blue.

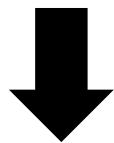
Risk Reduction of MACE in the **SOUL Trial** compared to FOURIER and ODYSSEY OUTCOMES

2017



FOURIER

37 % T2DM



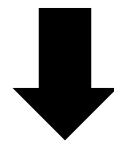
RRR – 15 %

2018



ODYSSEY OUTCOMES

29 % T2DM



RRR – 15 %

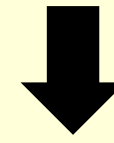
2024

ORAL SEMAGLUTIDE



SOUL

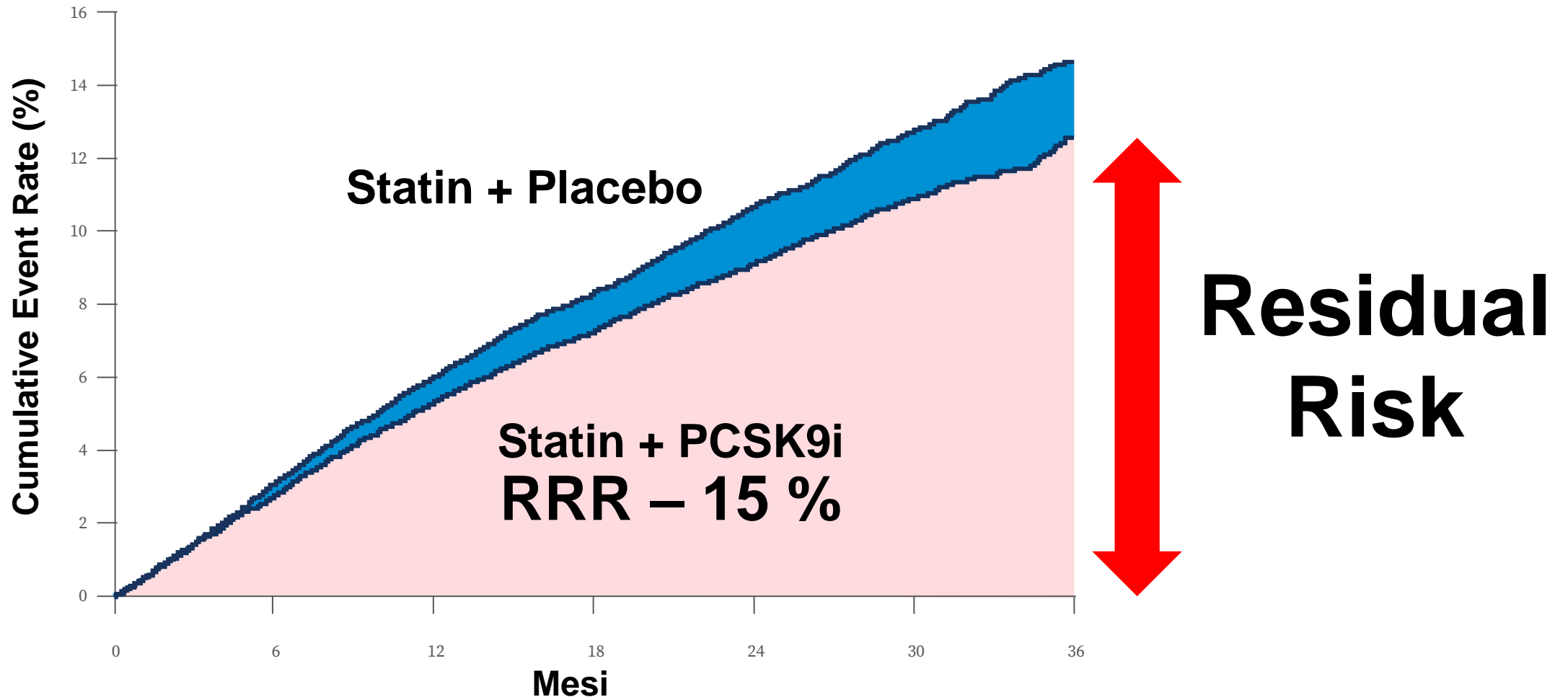
100 % T2DM



RRR – 14 %

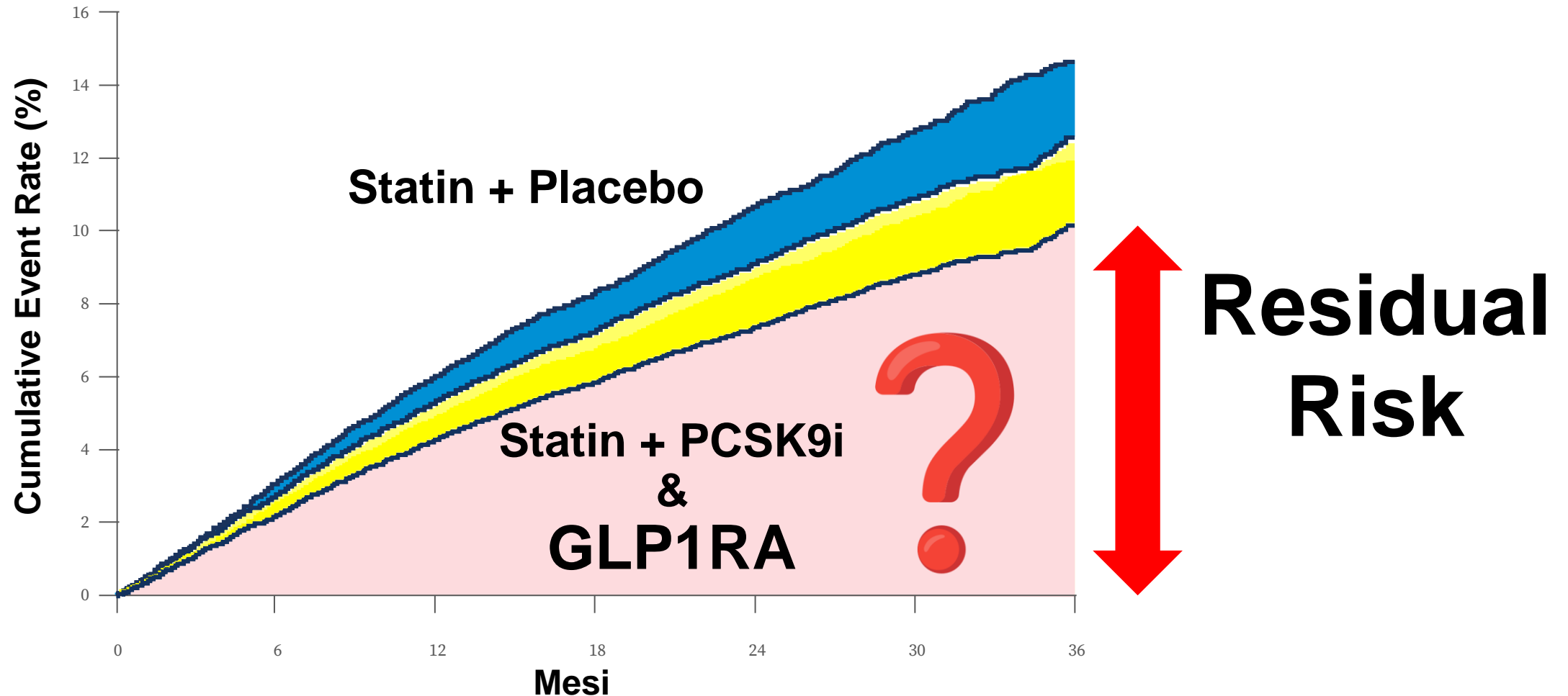
Riduzione del Rischio Residuo

Effetto **Additivo** e **Sinergico** delle Strategie Terapeutiche



Riduzione del Rischio Residuo

Effetto **Additivo** e **Sinergico** delle Strategie Terapeutiche



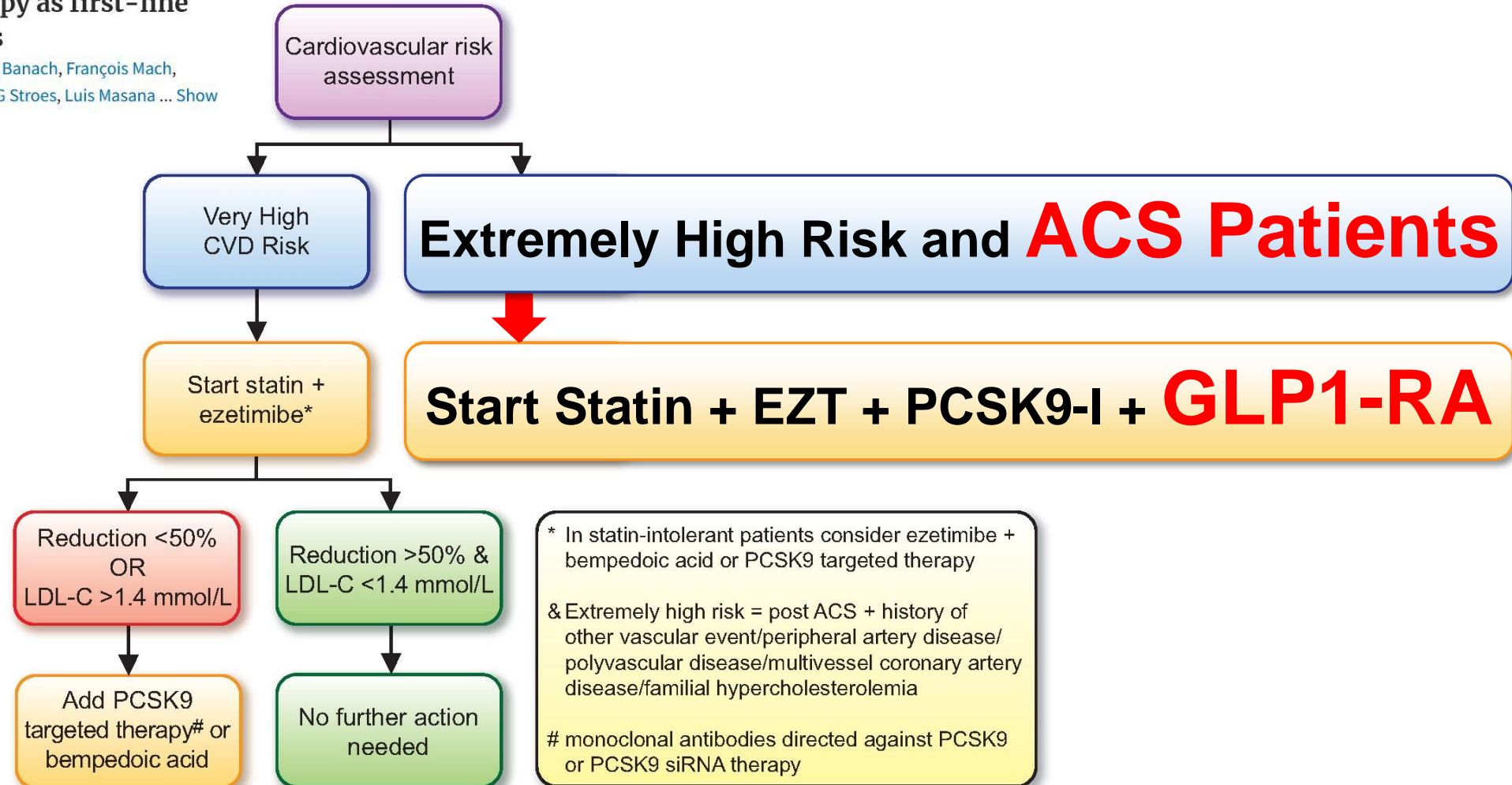
GLP1-RA *Fast Track*

Strike Early & Strike Strong in ACS Patients With T2DM

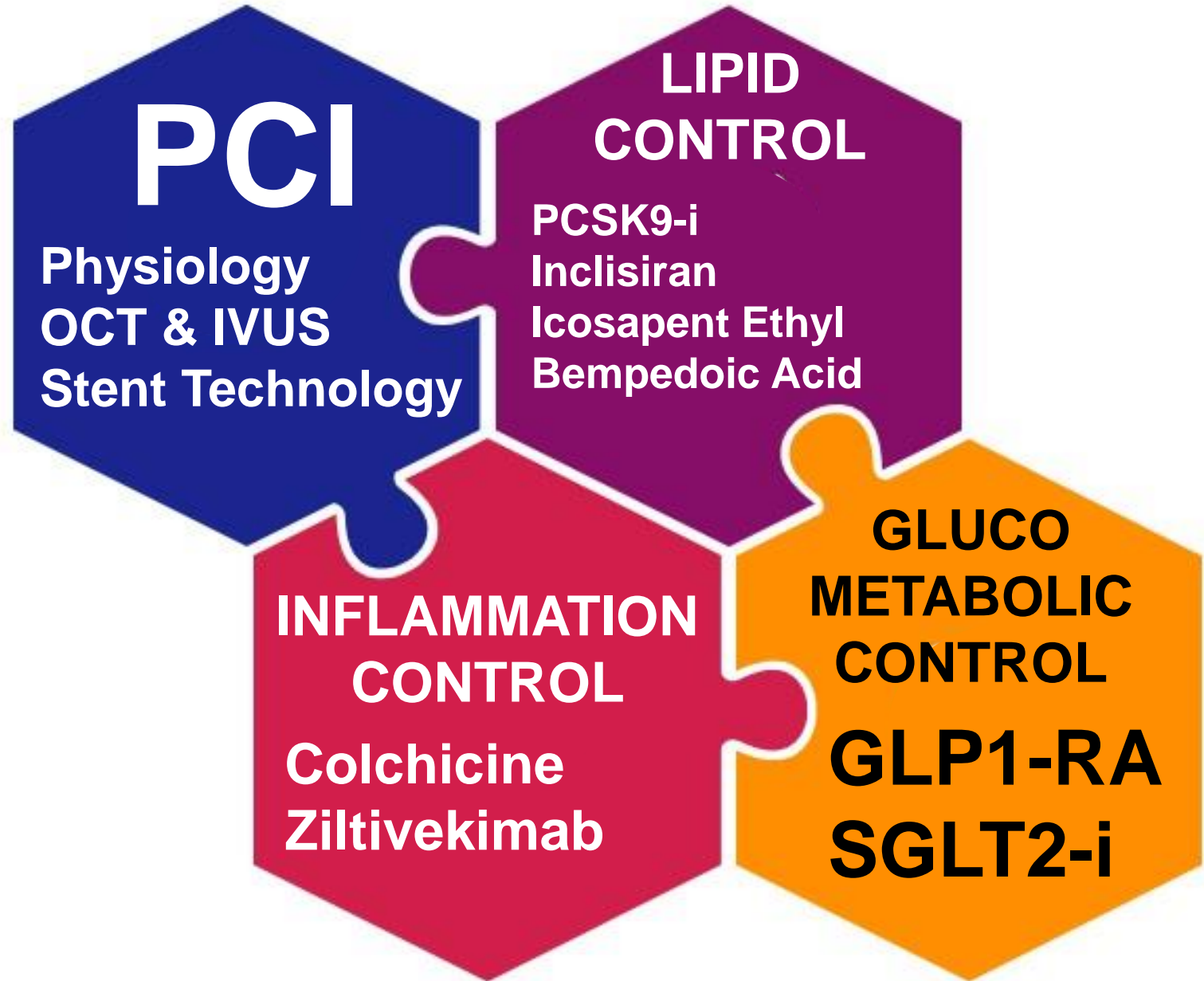
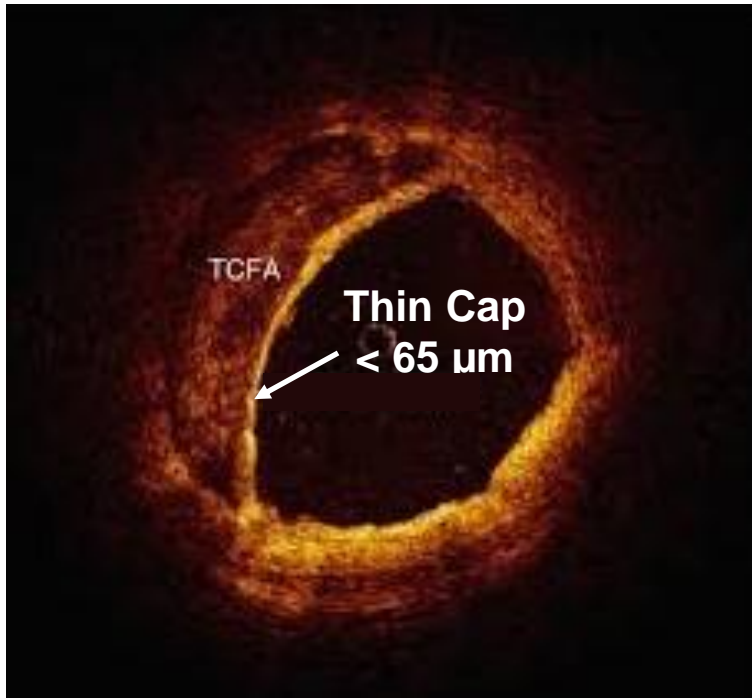
Combination lipid-lowering therapy as first-line strategy in very high-risk patients

Kausik K Ray ✉, Laurens F Reeskamp, Ulrich Laufs, Maciej Banach, François Mach, Lale S Tokgözoğlu, Derek L Connolly, Anja J Gerrits, Erik S G Stroes, Luis Masana ... Show more

Eur Heart J, 2021



Post - ACS Sealing HR Plaque Strategy



Interventional Drug Therapy